

CONTROL COPY
LOCATION # _____

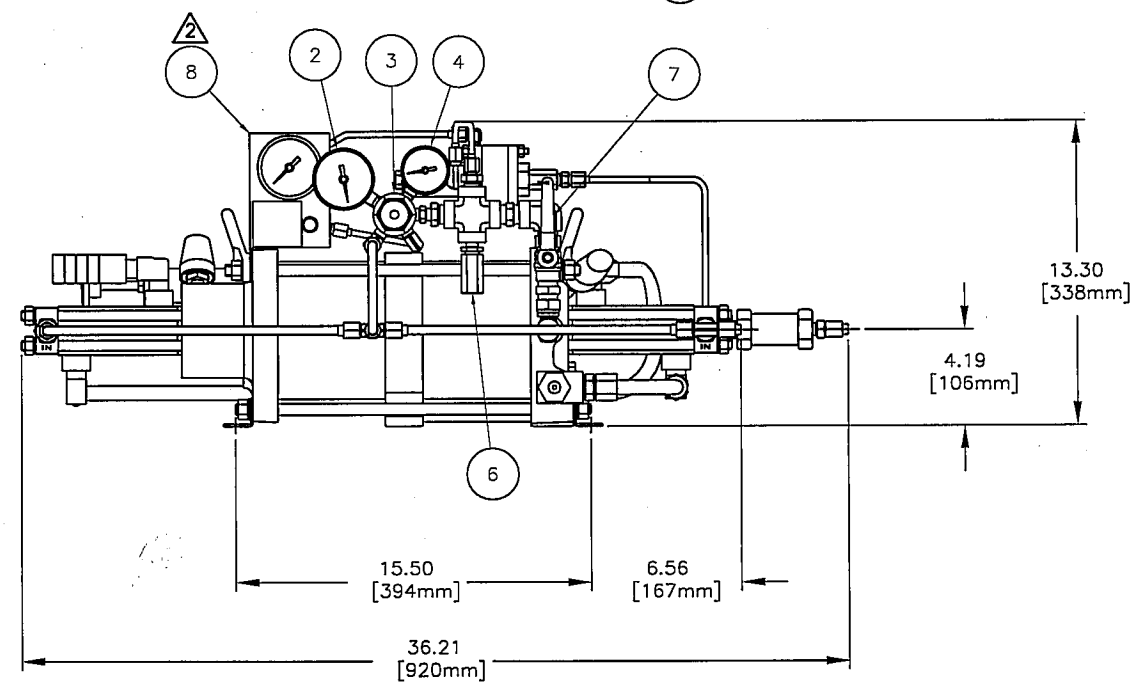
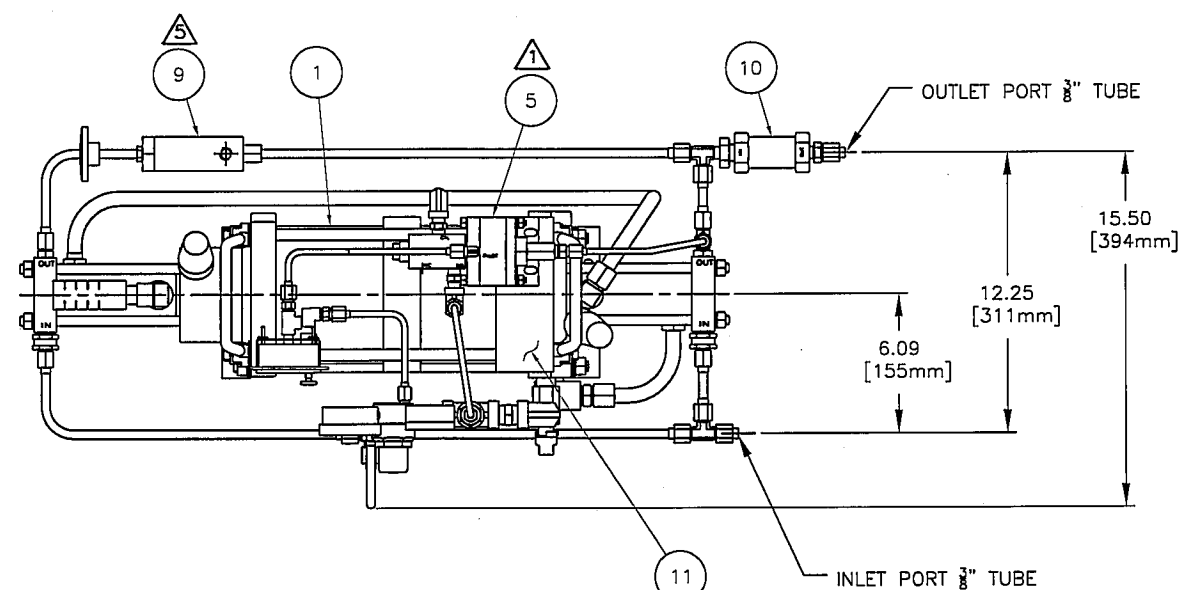
REVISIONS			
REV	DESCRIPTION	DATE	CHECKED
F	RELEASE PER ECO 24843	11/13/03	I RIVAS
G	REVISED PER ECO 25216	5/3/04	I RIVAS
H	REVISED PER ECO 25463	10/04/04	[Signature]

NOTES:

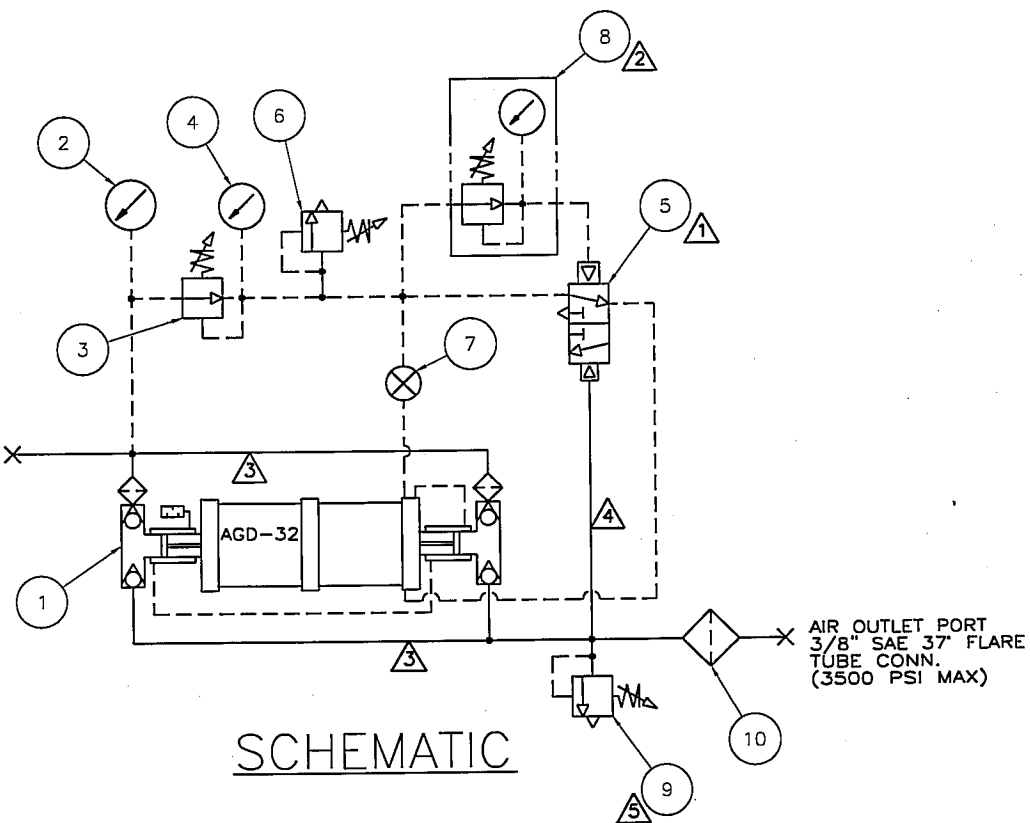
- 1 REMOTESET AIR PILOT SWITCH ITEM 5 IS A DOMELOADED SHUT OFF DEVICE FOR THE BOOSTER. THE AIR SIGNAL PRESSURE ESTABLISHED BY THE PANEL MOUNT MINI REGULATOR RELATES TO THE OUTLET SHUT OFF PRESSURE BY A NOMINAL RATIO OF 110:1.
- 2 RECORD THE AIR SIGNAL PRESSURES AND ADD TO REMOTESET LABEL USING THE FOLLOWING ACTUATION PRESSURES: 1900, 2700 & 3500 PSI. A MINIMUM DOWNSTREAM RECEIVER VOLUME OF 134 CU. IN. IS REQUIRED. IF READJUSTMENT IS NECESSARY FROM FACTORY SETTING SET RELIEF VALVE TO 115% OF REMOTESET PILOT SWITCH SETTING.
- 3 3/8" OD X .065 WALL THICKNESS, 304 C'RES SEAMLESS TUBING (MAX GAS WORKING PRESSURE 6500 PSI) (P/N CNM00073)
- 4 1/4" OD X .049 WALL THICKNESS, 304 C'RES SEAMLESS TUBING (MAX GAS WORKING PRESSURE 6500 PSI) (P/N CNM00020)
- 5 PRESSURE SETTINGS ARE ADJUSTABLE FROM 600 PSI TO 6000 PSI MAX.
- 6 ALL DIMENSIONS SHOWN ARE APPROXIMATE IN INCHES, WITH MILLIMETERS IN PARENTHESES.

TEST PROCEDURE:

1. ATTACH OUTLET RECEIVER VOLUME 134 CU. IN. MIN.
2. CONNECT INLET SUPPLY GAS NOMINALLY 800 PSI (N2) (± 100 PSI).
3. BUBBLE CHECK SYSTEM AT NOMINAL 1000 PSI (N2).
4. SET ALL SYSTEM RELIEF VALVES PER SCHEMATIC OR P/L AS SHOWN (+0 PSI -50 PSI).
5. SET REMOTESET AIR PILOT SWITCH AND NOTE SIGNAL PRESSURE AS REFERENCED BY NOTE 2 OF THIS DRAWING (± 50 PSI).
6. RECHECK SYSTEM (BUBBLE CHECK) FOR LEAKAGE AT FULL SYSTEM PRESSURE.
7. VENT CIRCUIT AND PREPARE FOR SHIPMENT.



AIR INLET PORT
3/8" SAE 37" FLARE
TUBE CONN.
(3000 PSI MAX)



QTY	PART NUMBER	DESCRIPTION	MANUFACTURE	ITEM
1	57883	ACCESSORIES MOUNTING BRACKET	HASKEL	11
1	28728-1	OUTLET FILTER (5 MICRON)	HASKEL	10
1	15670-2	RELIEF VALVE SET @ 5500 PSI	HASKEL	9
1	57875	REMOTESET REGULATOR ASSEMBLY	HASKEL	8
1	27992	SPEED CONTROL VALVE	HASKEL	7
1	112C-1/4-155#	RELIEF VALVE SET @ 155 PSI	HASKEL	6
1	55790	REMOTESET AIR PILOT SWITCH N.O. INCR. (SEE NOTE 2)	HASKEL	5
1	28273	REGULATED PRESSURE GAUGE 0-300 PSI	HASKEL	4
1	51530	PRESSURE REGULATOR SET @ 110 PSI	HASKEL	3
1	28271	INLET PRESSURE GAUGE 0-3000 PSI	HASKEL	2
1	IP-1033	GAS BOOSTER W/EXT PILOT MOD (28270-2, 28881)	HASKEL	1

NEXT ASSY (REF ONLY) G-0763 P-6172 043761		Haskel International, Inc. Industrial Technologies Division Burbank, California 91502	
APPROVALS	DATE	TITLE	
J. PEREZ	1/28/89	SCUBAMP AIR BOOSTER	
CHECKED	DATE	SIZE	FSCM NO.
J. PEREZ	1/28/03	D	81400
APPROVED	DATE	DWG NO.	REV
SDO	1/28/89	56558	H
CAD FILE NAME	56558	SCALE	NO MANUAL REVISIONS ALLOWED
		1/4	SHEET 1 of 1

SCHEMATIC